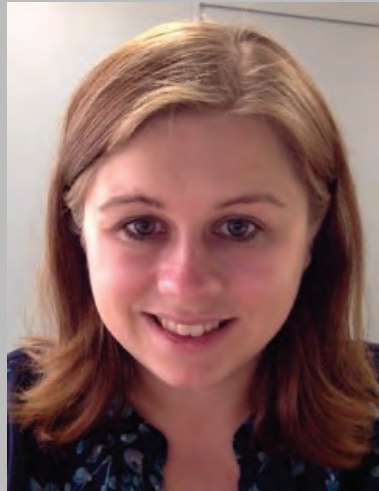




WESTON ROUNDTABLE SERIES



Thursday, March 9, 2017

1163 Mechanical Engineering

1513 University Avenue

4:15 - 5:15 PM

coffee, tea and cookies at 4:00 PM

Environmental Impacts of Evolving Consumer Technology

Andrea Hicks

Assistant Professor, Civil and Environmental Engineering (CEE)

UW-Madison

Technology continuously evolves to become more complex. This increase in complexity is not without environmental, economic, and societal impacts. This has been particularly true for consumer products, in that what was once only dreamt of is now reality. Tools such as life-cycle assessment and agent-based modeling allow for the quantification of these impacts, and generate an understanding of potential unintended consequences. This will be explored looking at products such as energy-efficient lighting, nanoenabled textiles, and single-serve coffee pods.



**Center for Sustainability
and the Global Environment**

NELSON INSTITUTE
UNIVERSITY OF WISCONSIN-MADISON

co-sponsored by SAGE and the Department of Civil and Environmental Engineering
full calendar available online at www.nelson.wisc.edu/sage/weston-roundtable/